



SafeSeal range of trays are manufactured from non combustable stainless steel and comply with 1996D0603-EN-12.06.2003-002.001-2. The SafeSeal range of trays are Class A1 and fully comply with Approved Document B: Fire Safety Volume 2 and Building Regulations 7.2.

Product Features

- A1 Fire Rated
- Manufactured in 304 or 316 Austenitic Stainless Steel
- 0.7mm thick as standard
- Shear tested by Lucideon Labs
- Fast and easy Installation
- No Mechanical Fixing
- Fast delivery from approval of drawings
- Full take off and design service available
- Water flow tested by BBA

For sales or technical assistance please call

01189 753 377 or email sales@dorseys.co.uk

Standards

A1 Fire Rated

SafeSeal A1 fire rated cavity tray is manufactured entirely from 304 or 316 grade Stainless Steel. Stainless Steel is recognised by the European Commission as an A1 fire rated classified material, the highest level of fire safety performance therefore no additional testing is required to prove its non-combustible properties.

Why use Dorsey SafeSeal

SafeSeal is a single part non-combustible cavity tray for use within the cavity, built into the brickwork of the external leaf. Supplied in 2.5m lengths meaning less lap joints. Manufactured in 0.7mm stainless steel as standard, giving increased longevity. Tapes are used for all joints which is a tried and tested system and has been used within the cavity tray installation process for many years. There is no need for mechanical fixings. SafeSeal keeps it simple and easy when it comes to installation. The SafeSeal team provide a full take off and design service completely free of charge, making it easy to order. We understand no two projects are the same, our design team can provide bespoke solutions to suit any detail.

Building Regulations Document B (Fire Safety) 2019 Edition

In response to incidents involving the spread of fire within external cavities on tall buildings, the Building Regulations have been updated to prohibit the use of combustible materials within the external cavities of buildings over 18m in height (soon to be 11m). The regulations apply to buildings containing one or more dwellings; an institution; or a room for residential purposes (excluding any room in a hostel, hotel or boarding house, but including student accommodation, care homes, sheltered housing, hospitals and dormitories in boarding schools).



For sales or technical assistance please call

01189 753 377 or email sales@dorseys.co.uk

System components

Lengths

To be cut to any length required

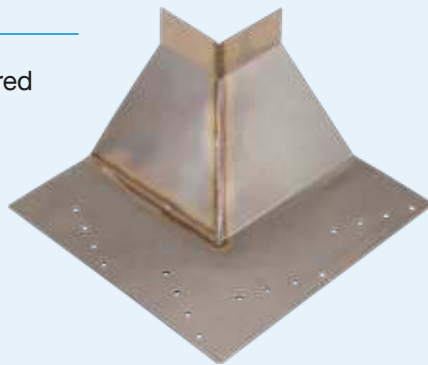
**SAFESEAL
CAVITY TRAY 2.5m LENGTHS**



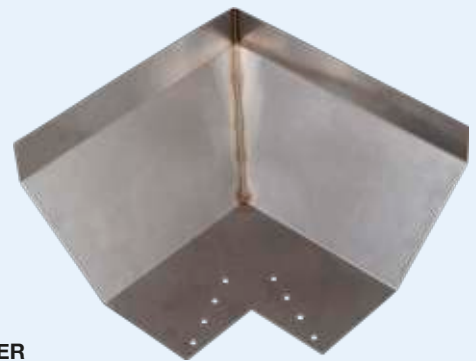
Corners

Corners manufactured to any angle

**SAFESEAL
EXTERNAL CORNER**

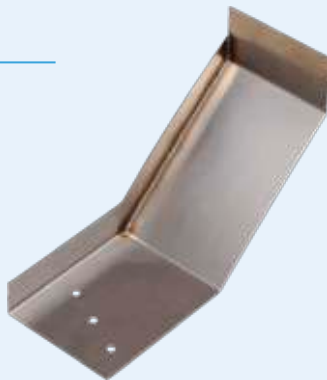


**SAFESEAL
INTERNAL CORNER**



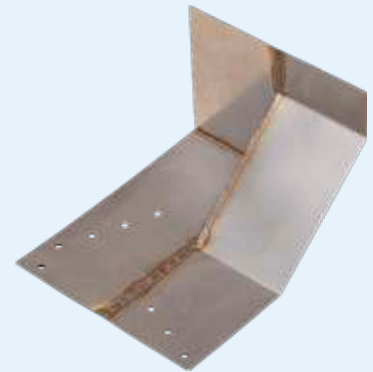
Stop ends

**SAFESEAL
STANDARD STOP END**



**SPECIAL SITE SPECIFIC
BRICK RETURN STOP END**

(AVAILABLE IF REQUIRED AT
ADDITIONAL COST)



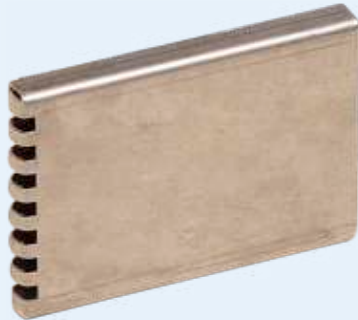
For sales or technical assistance please call

01189 753 377 or email sales@dorseys.co.uk

Ancillary Products

Weepholes

SAFESEAL
WEEP VENT



SAFESEAL
L SHAPED WEEPHOLE



Tapes

DAFA
MOISTURE BARRIER TAPE
60mm x 25m

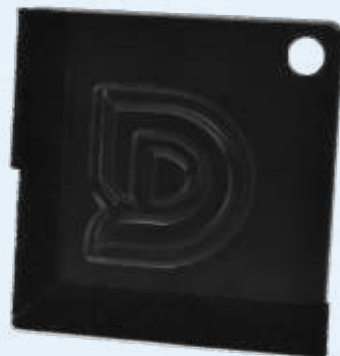


SAFESEAL
DOUBLE SIDED BUTYL TAPE
50mm x 1.5mm x 10m



Tools

SAFESEAL
TAPE APPLICATOR TOOL



For sales or technical assistance please call

01189 753 377 or email sales@dorseys.co.uk

Specifications

Product Name	Dorsey SafeSeal
Cavity Widths Accommodated	From 20mm upwards (as standard)
Material	Austenitic stainless steel
Thickness	0.7mm
Joint Overlap	100mm minimum
Tape	Double-sided Butyl tape 50mm x 1.5mm x 10m DAFA Moisture Barrier Tape 60mm x 25m
Length of Straight Cavity Tray	2,500mm
External and Internal Corners	90° as standard

For sales or technical assistance please call

01189 753 377 or email sales@dorseys.co.uk